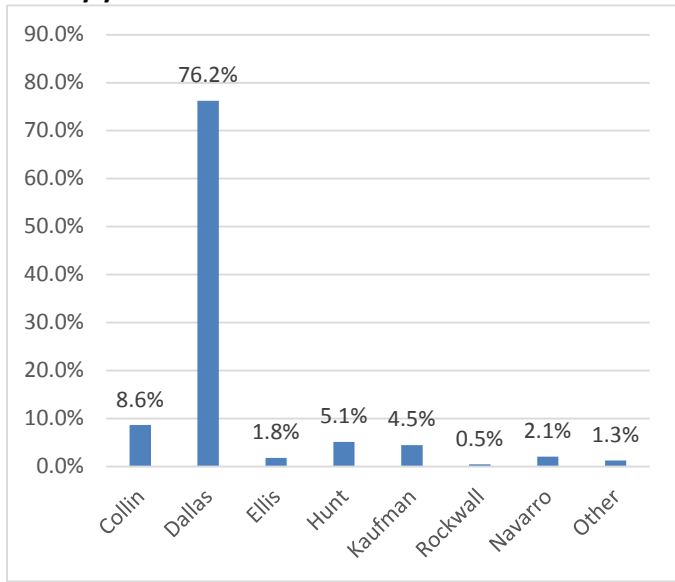


NorthSTAR 2013 Needs Assessment Survey Report - Adults

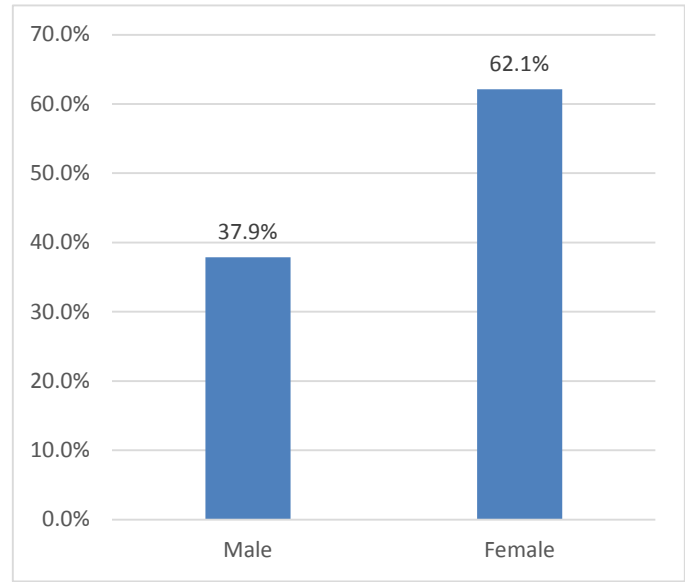
(632 Surveys)

NORTH TEXAS BEHAVIORAL HEALTH AUTHORITY

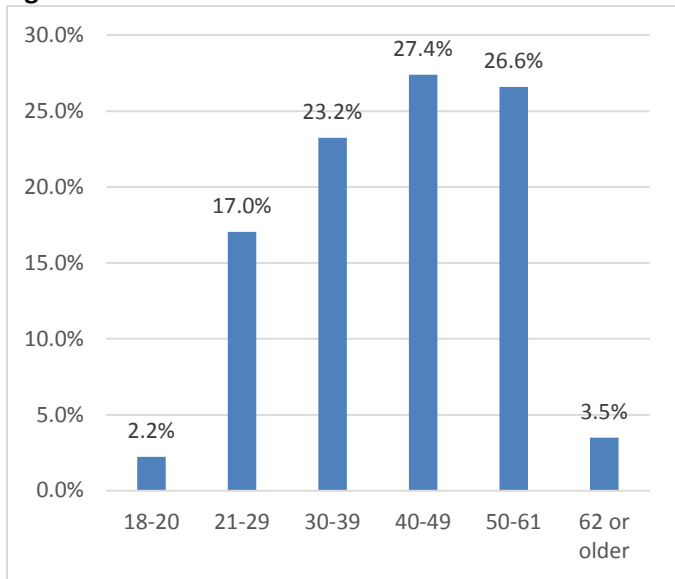
County you live in:



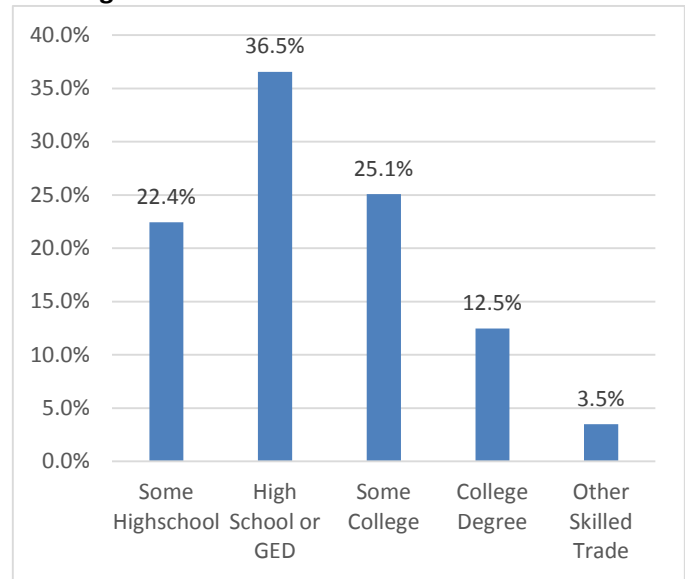
Gender:



Age:

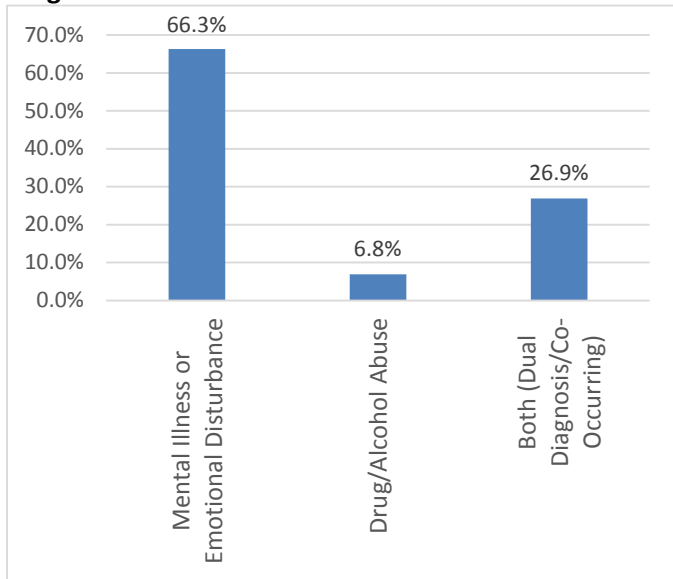


Your highest level of education received:

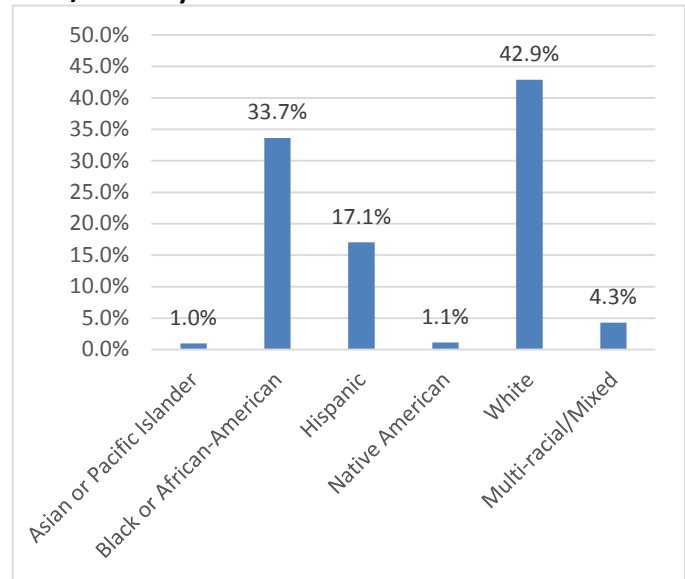


NORTH TEXAS BEHAVIORAL HEALTH AUTHORITY

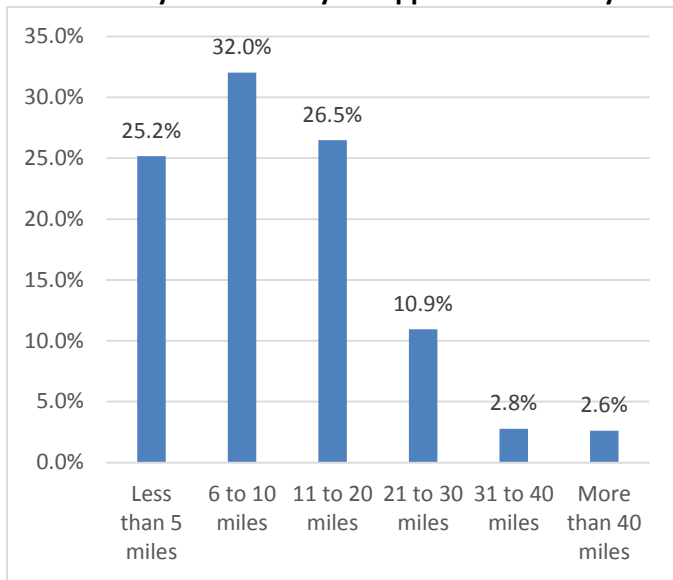
Diagnosis:



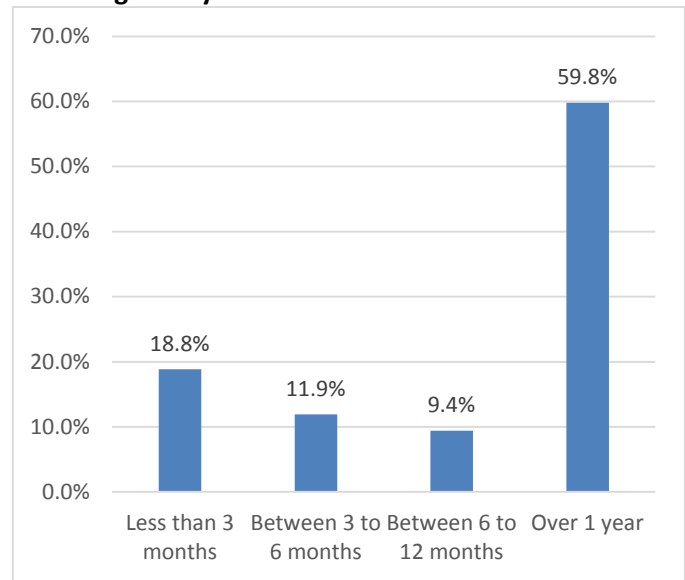
Race/Ethnicity:



How far did you travel to your appointment today?

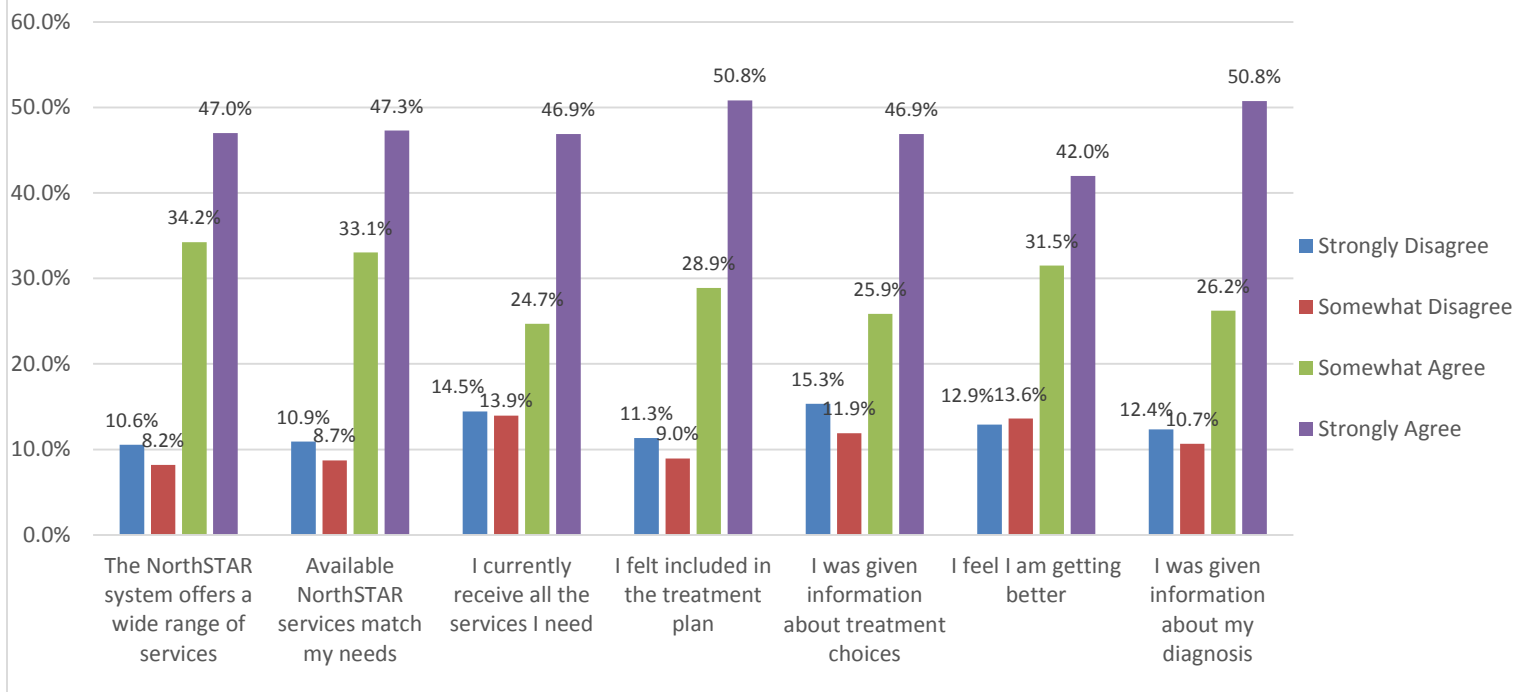


How long have you received NorthSTAR services?

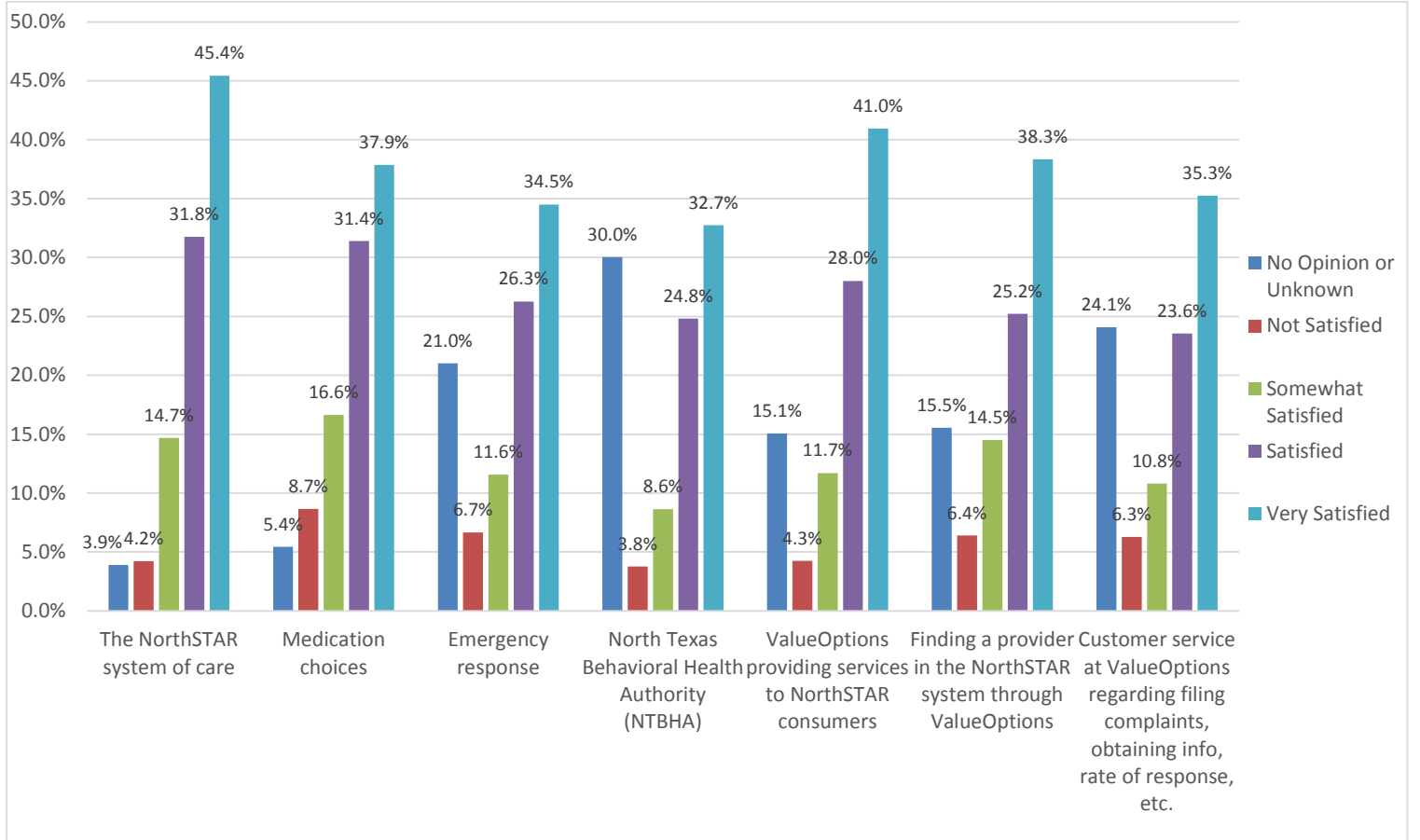


NORTH TEXAS BEHAVIORAL HEALTH AUTHORITY

Please Tell Us How Much You Agree Or Disagree With The Following Statements:

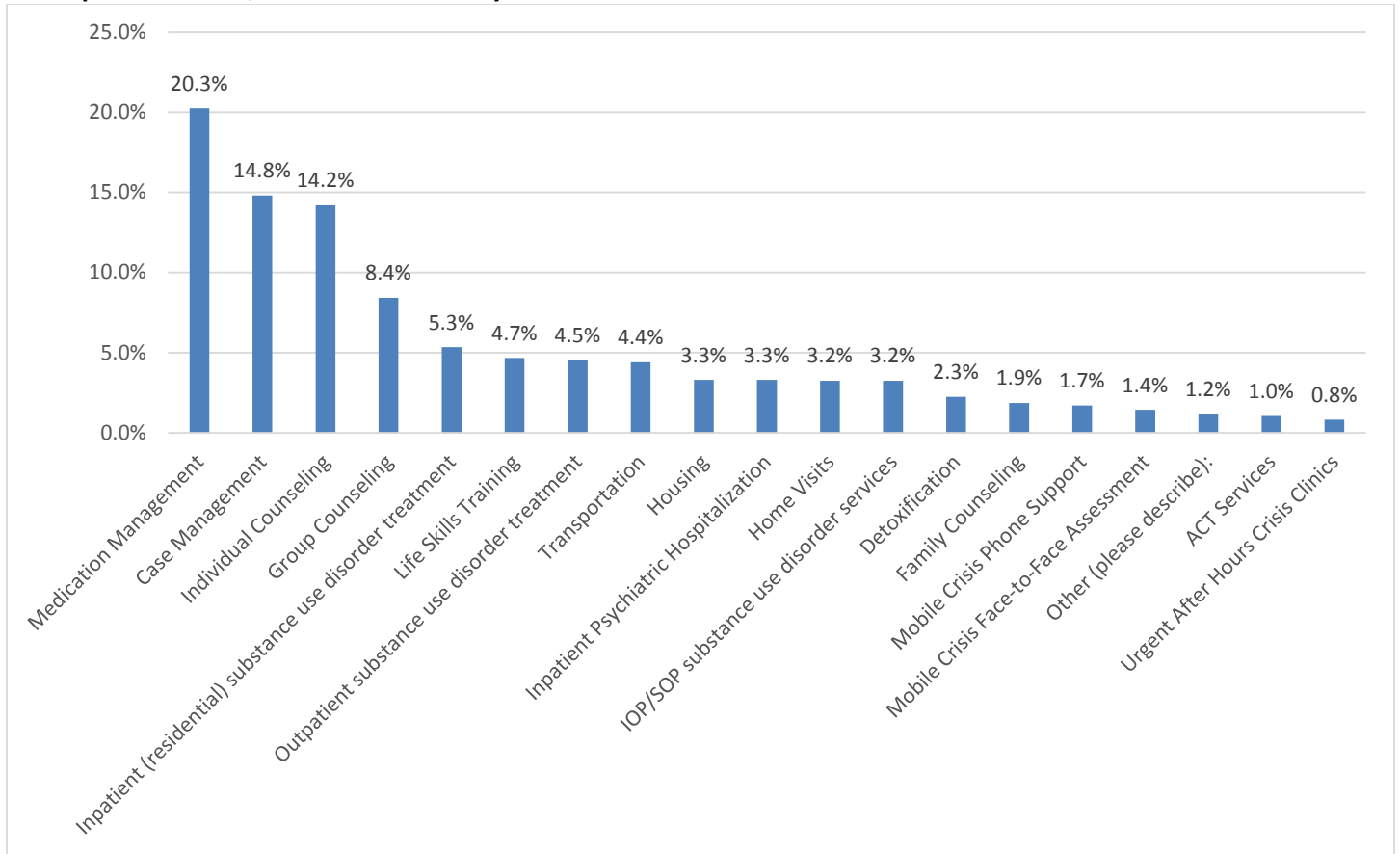


Please tell us how satisfied you are with these services:



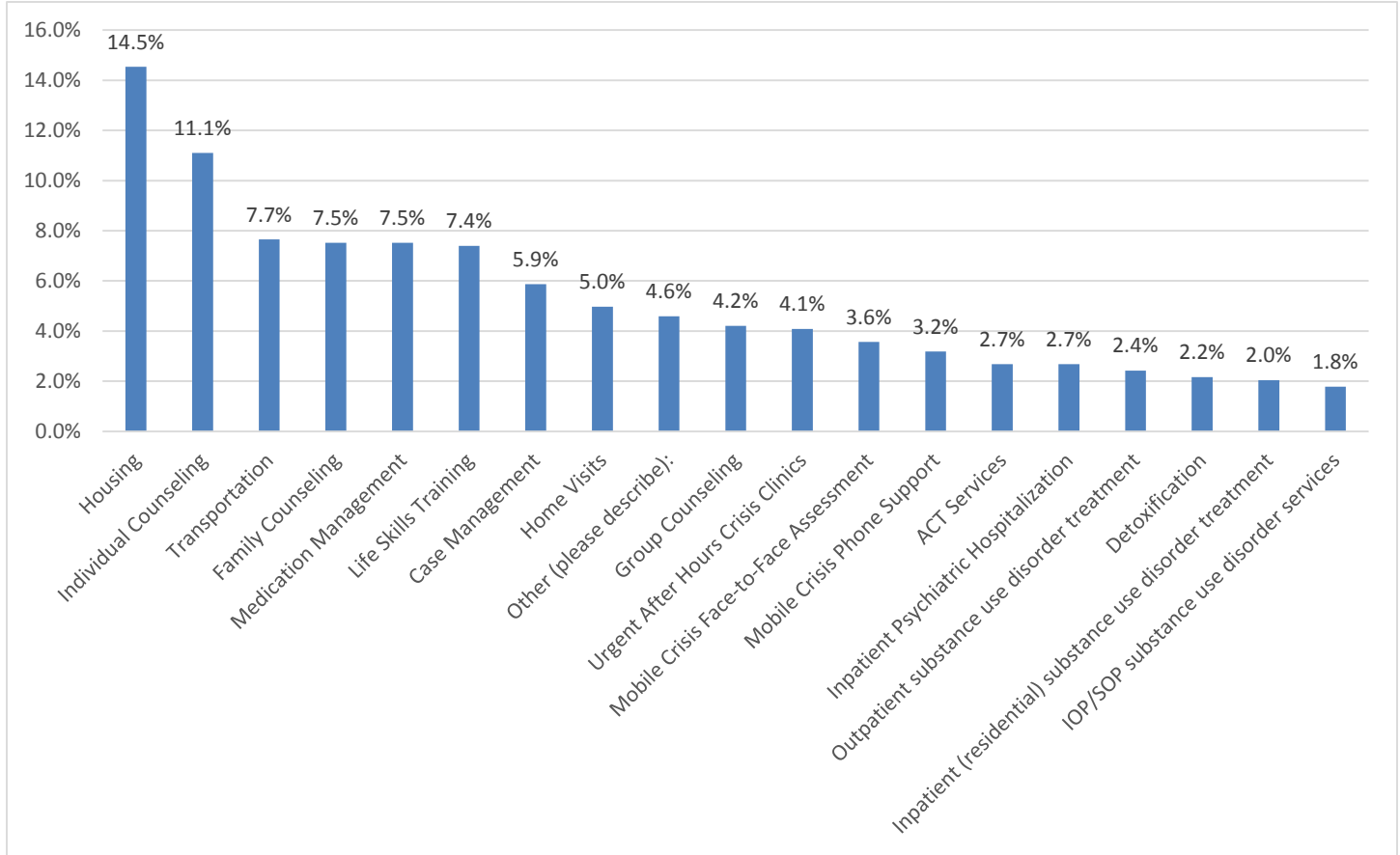
NORTH TEXAS BEHAVIORAL HEALTH AUTHORITY

In the past 6 months, what services have you received?

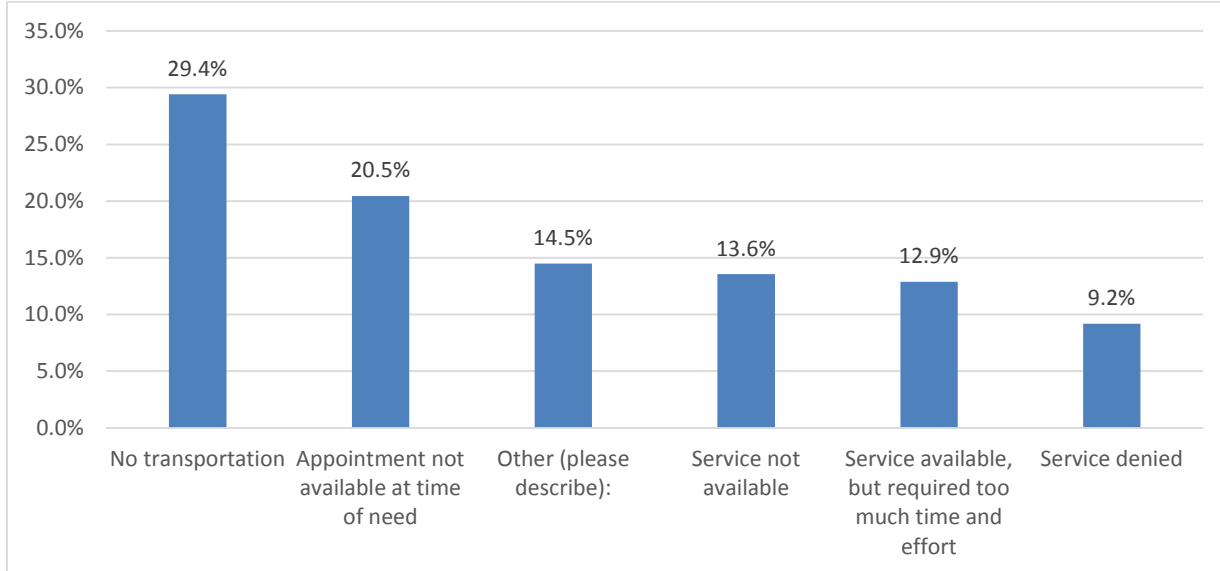


NORTH TEXAS BEHAVIORAL HEALTH AUTHORITY

In the past 6 months, what services have you needed but could not get?



Please indicate what problems you have experienced which resulted in your inability to get services:



NORTH TEXAS BEHAVIORAL HEALTH AUTHORITY

What other services do you think are missing or need to be expanded to serve your needs?

