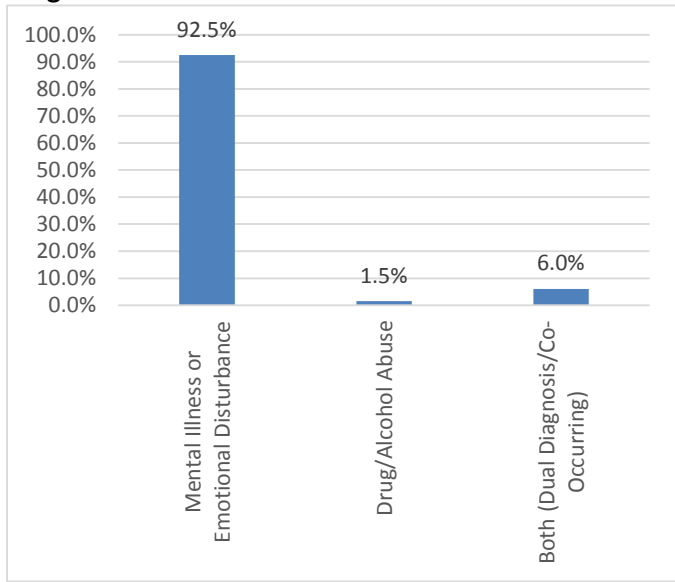


NorthSTAR 2013 Needs Assessment Survey Report - Youth

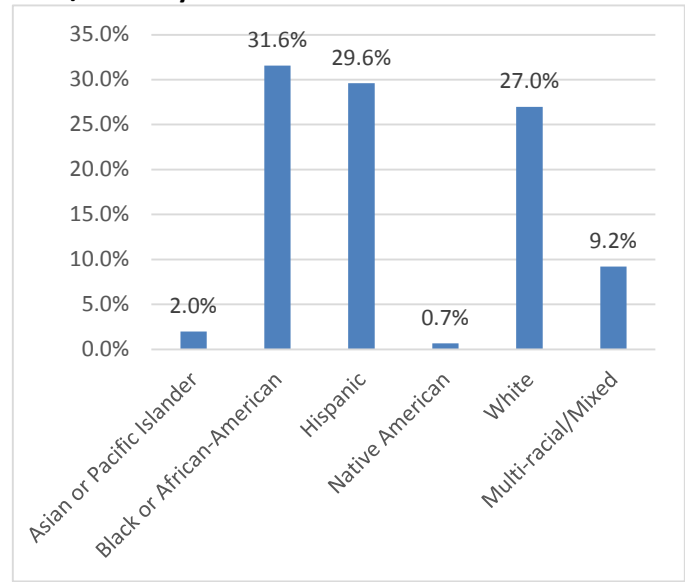
(153 Surveys)

NORTH TEXAS BEHAVIORAL HEALTH AUTHORITY

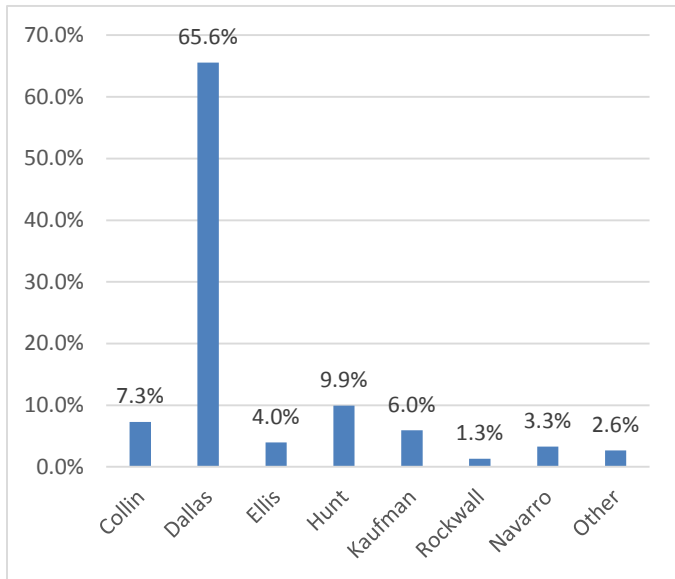
Diagnosis:



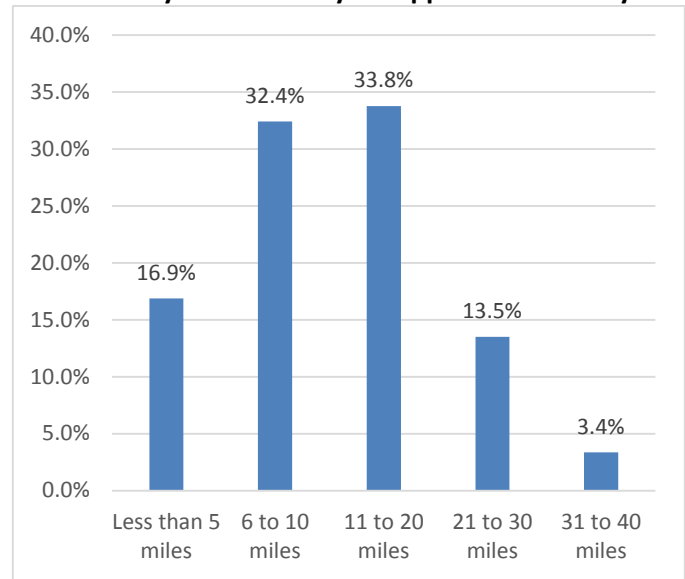
Race/Ethnicity:



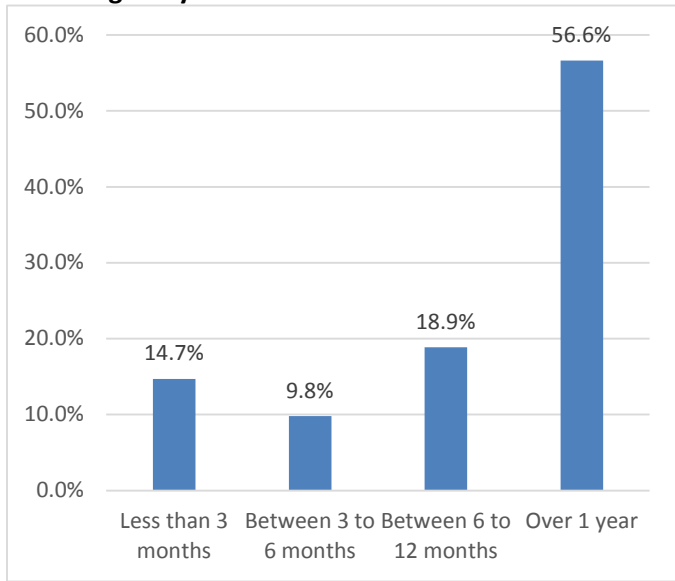
Child lives in:



How far did you travel for your appointment today?

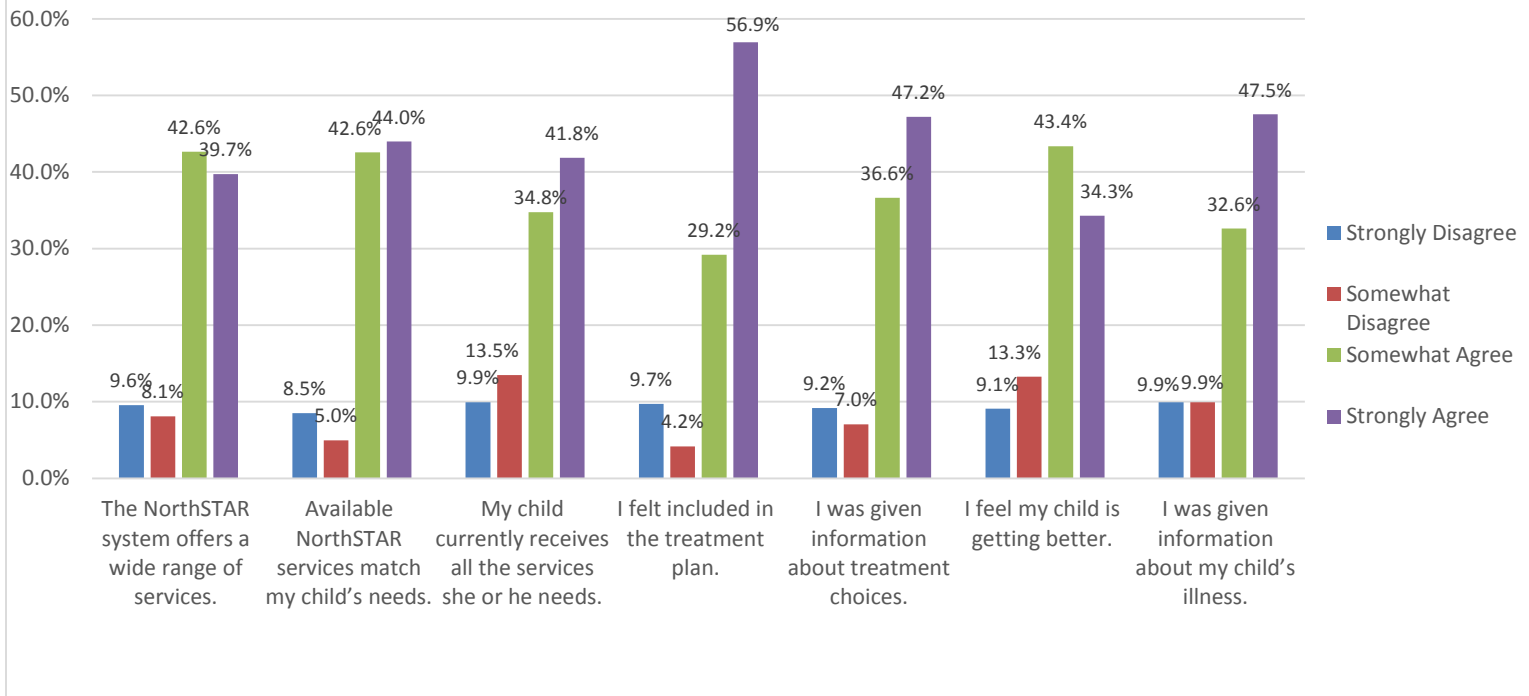


How long has your child received NorthSTAR services?

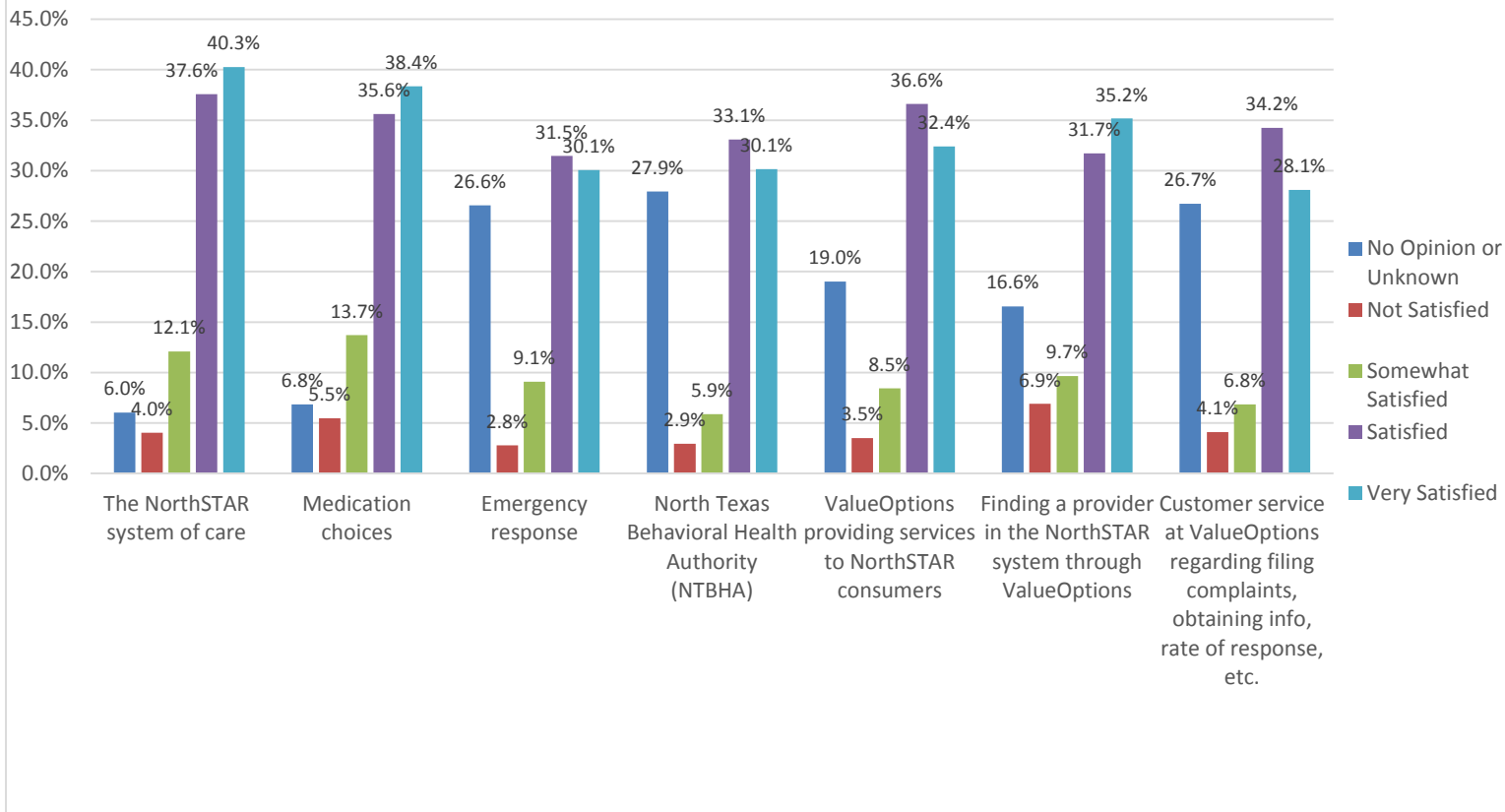


NORTH TEXAS BEHAVIORAL HEALTH AUTHORITY

Please Tell Us How Much You Agree Or Disagree With The Following Statements:

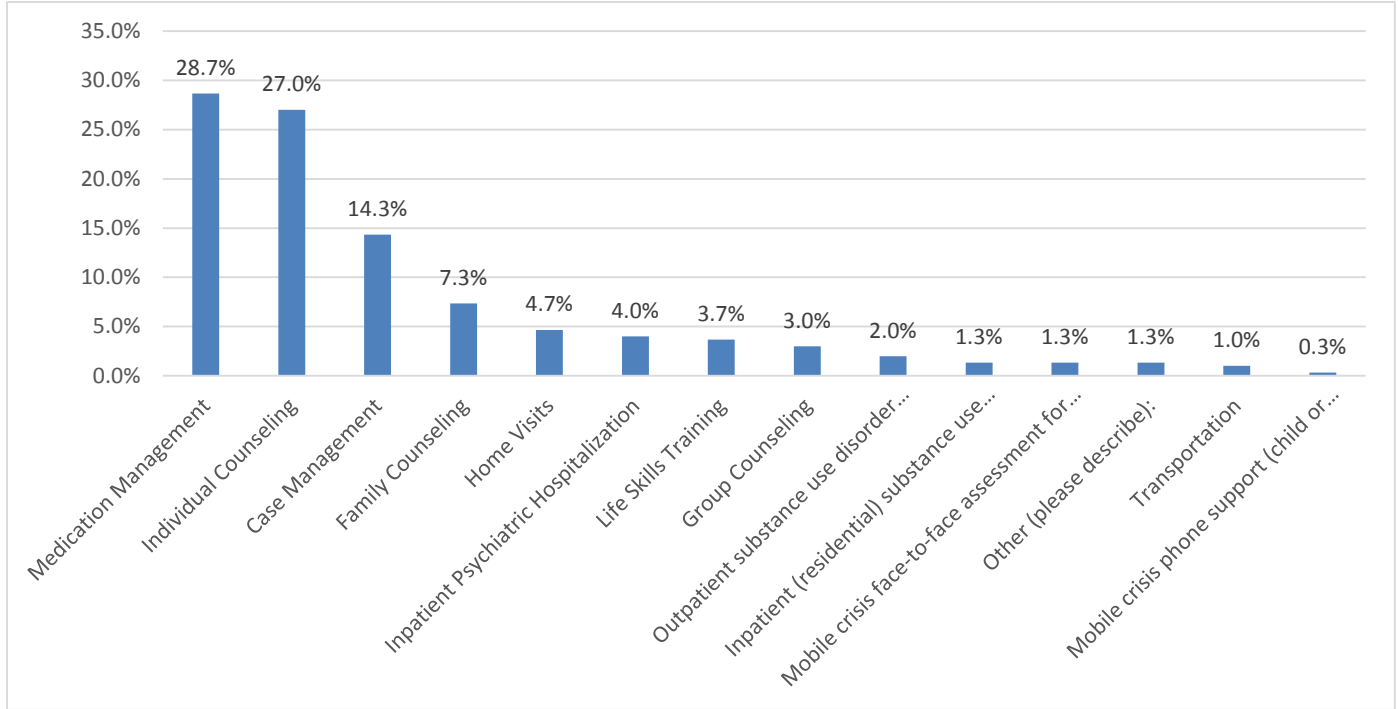


Please tell us how satisfied you are with these services:

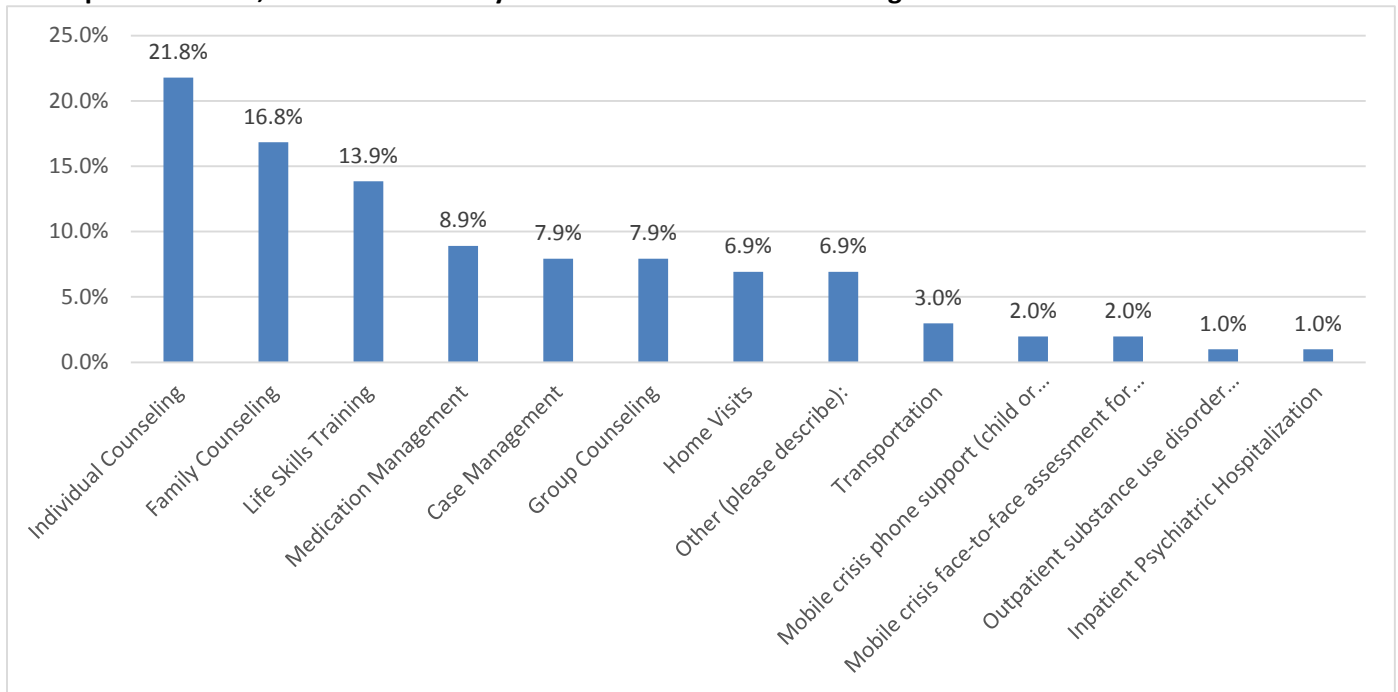


NORTH TEXAS BEHAVIORAL HEALTH AUTHORITY

In the past 6 months, what services has your child received?

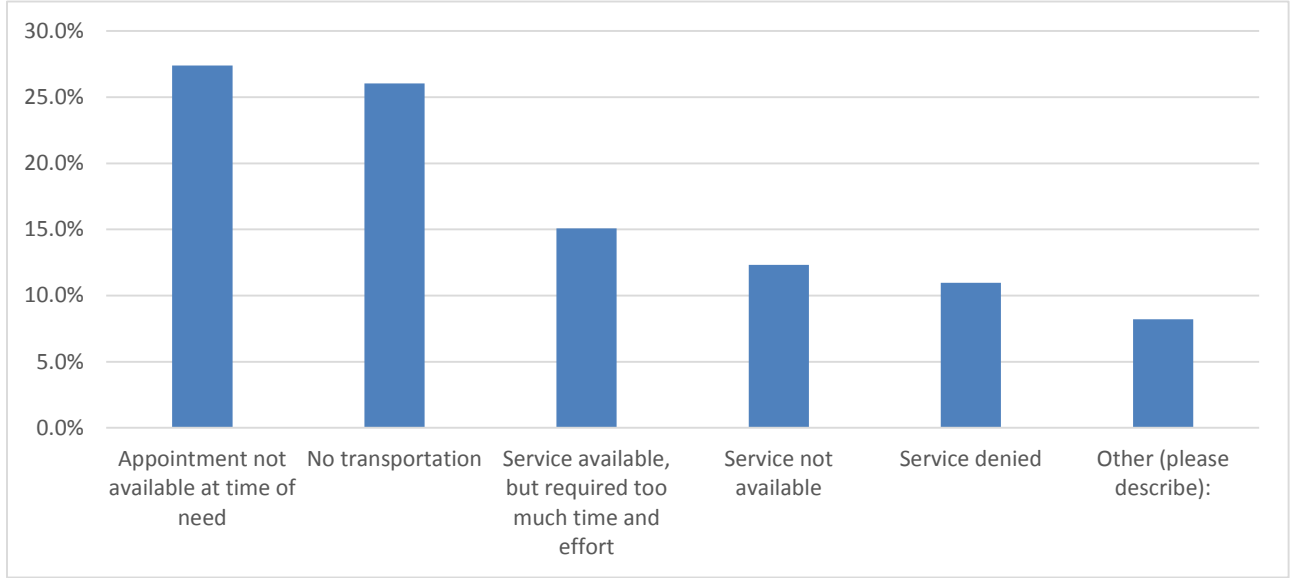


In the past 6 months, what services has your child needed but could not get?



NORTH TEXAS BEHAVIORAL HEALTH AUTHORITY

Please indicate what problems you have experienced which resulted in your inability to get services for your child:



NORTH TEXAS BEHAVIORAL HEALTH AUTHORITY

What other services do you think are missing or need to be expanded to serve your child?

